

GREAT MINCE 220C

WMG -220C



Watanabe's unique specialty roll is complete! It ensures excellent grinding quality without sacrificing freshness. It also secures the safety of the operator.



EXCELLENT FRESHNESS PRESERVATION

By implementing Watanabe's unique specialty roll, we can achieve production without sacrificing freshness.

HYGENE

To ensure sanitary product making, the cylinder, roll, plate ring, and the meat receiving plate are all made by stainless steel.

SAFETY DESIGN①

Prevents unintentional startup and ensures operator safety.

SAFETY DESIGN②

The machine stops in case of improper use. This prevents production loss due to machine failure.

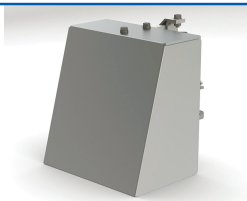
INFEED SECTION WITH EN STANDARDS FOR SAFETY

Ensures operator safety with a design that prevents hands from reaching the roll from the infeed section.

Easily Detachable for Effortless Cleaning

Parts that come into contact with meat can be easily removed, making cleaning simple.

Deflector (Option)



Dedicated Foot Switch (Option)

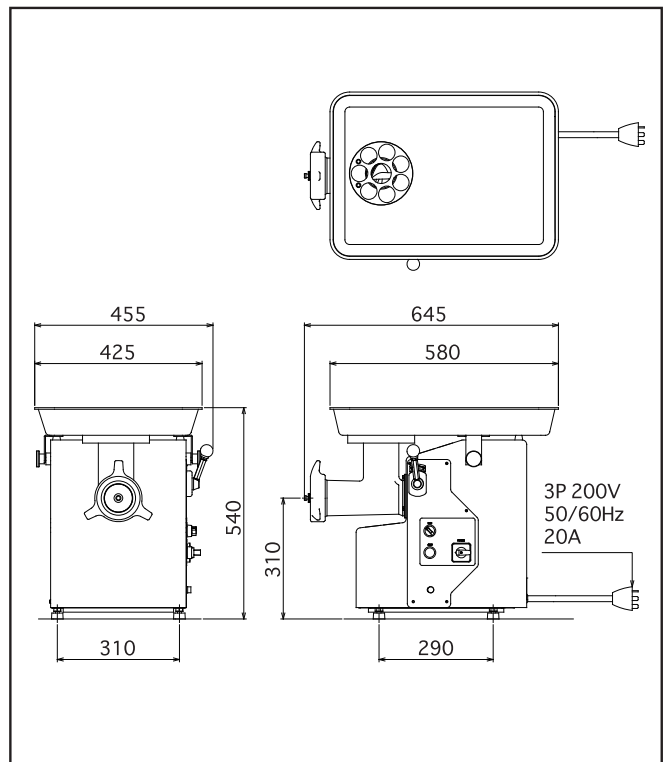


■SPECIFICATIONS

DIMENSIONS	W455*L645*H540mm
WEIGHT	68kg
PROCESSABLE DIMENSIONS	Circular: R25mm, Rectangular: W35mm
CAPACITY	Max 450kg/hr
SLICE TEMPERATURE	-4°C~0°C(Depends on product)
RATED ELECTRIC CAPACITY	OUTPUT 1.5kW CURRENT 7.3A/6.9A (50/60Hz w/o load)
POWER CONSUMPTION	460W/400W (50/60Hz w/o load)
POWER SUPPLY	3Phase 200V 50/60Hz More than 20A

■DIMENSIONS

PLEASE CHECK APPROVED DRAWING FOR FURTHER DETAILS.



WATANABE
WATANABE FOODMACH CO.,LTD.

2-12-26 TSUYUHASHI NAKAGAWA-KU NAGOYA JAPAN
TEL052-361-8511 FAX052-361-8490
URL : <https://www.foodmach.co.jp/>

SALES AGENT