

SUPER BIG 410

WBG-410

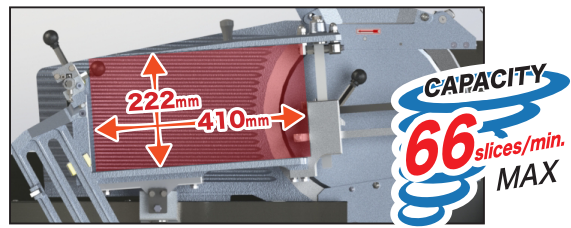


NEW GENERATION FROZEN SLICER



Outstanding Stability Despite Slimmer Design

Even with its slimmer body, the machine maintains powerful performance. It can slice large pieces of meat effortlessly. With a maximum slicing speed of 66 slices per minute (when processing meat weighing 20 kg), the high-speed slicer ensures excellent stability.



Smooth & Easy Operation

The slicing speed can be easily adjusted with a single volume knob, allowing simple and intuitive operation. The machine features a variable-speed belt system that enables consistent slicing regardless of thickness settings. In addition, an inverter-controlled motor ensures smooth and quiet operation.



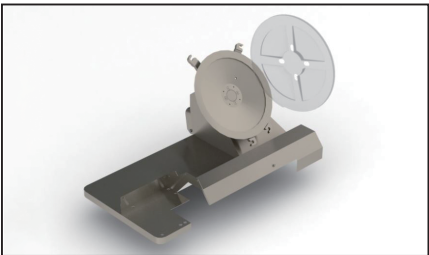
Safety

Equipped with Watanabe's original operation lever and an emergency stop switch for a dual safety guard system. The control circuit is designed with a low-voltage specification to ensure safe operation.



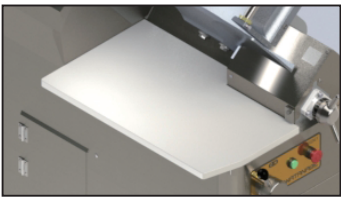
Sanitation Engineering

Building on proven technology, we've pursued improved sanitation and ease of cleaning. The slicer is fully washable, significantly reducing cleaning time. A round protective cover is attached for safety during cleaning.



Options

- By attaching a cutting board (made of antibacterial material), cutting work can be performed directly in the meat receiving area.
- Adding a foot switch allows hands-free operation, improving work efficiency!

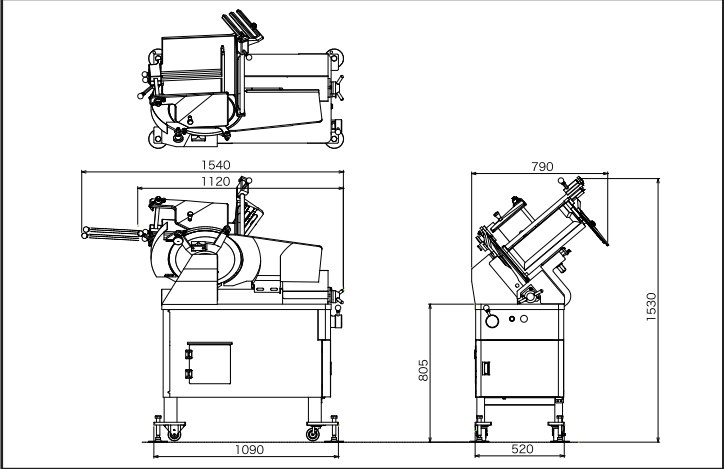


Cutting Board (Antibacterial material)

SPECIFICATION

DIMENSIONS	W1120*L790*H1530mm
WEIGHT	300kg
PROCESSABLE DIMENSIONS	W1410*L222*H425mm (When using needle plate)
SLICE THICKNESS	0~30mm (Depends on product)
CAPACITY	40~66slices/min
SLICE TEMPERATURE	-6℃~-2℃(Depends on product)
RATED ELECTRIC CAPACITY	OUTPUT 1.54kW CURRENT 7.0A
POWER CONSUMPTION	1.07kW/0.93kW (50/60Hz w/o load)
POWER SUPPLY	3Phase 200V 50/60Hz More than 20A

DIMENTIONS PLEASE CHECK APPROVED DRAWING FOR FURTHER DETAILS.



WATANABE
WATANABE FOODMACH CO.,LTD.

2-12-26 TSUYUHASHI NAKAGAWA-KU NAGOYA JAPAN
TEL052-361-8511 FAX052-361-8490
URL: <https://www.foodmach.co.jp/>

SALES AGENT