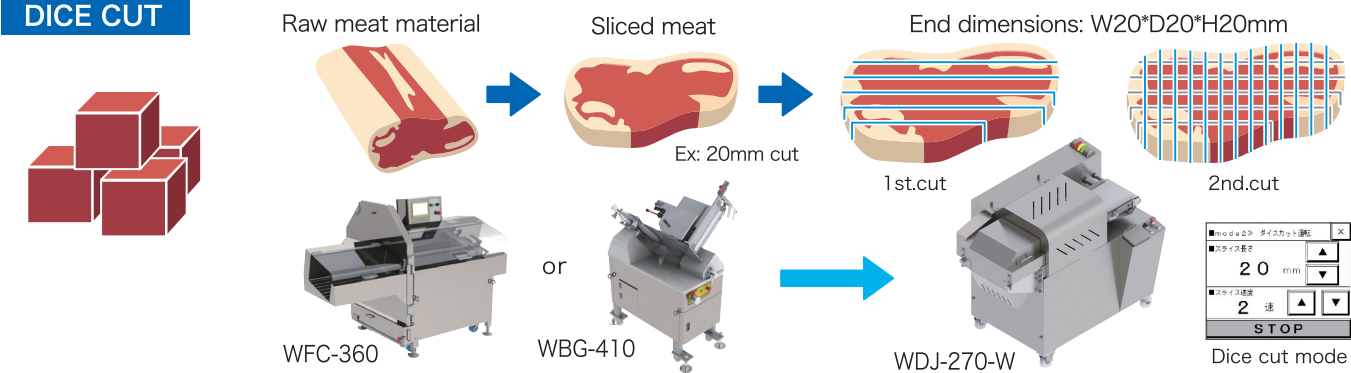
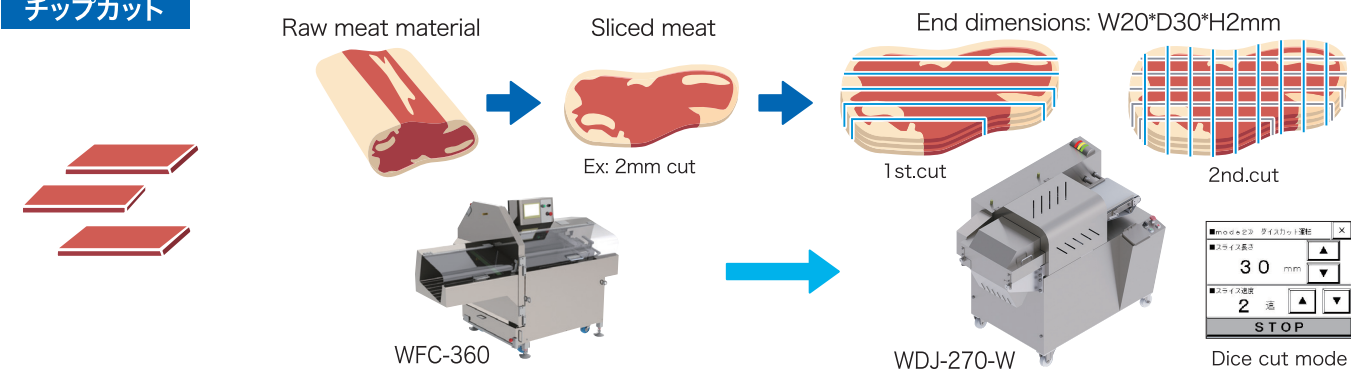


ITEM FLOWCHART

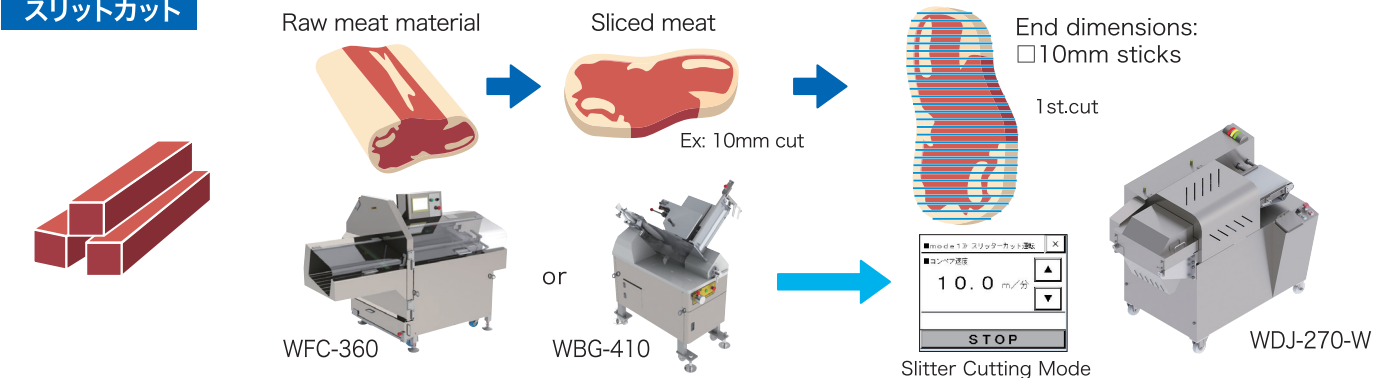
DICE CUT



チップカット



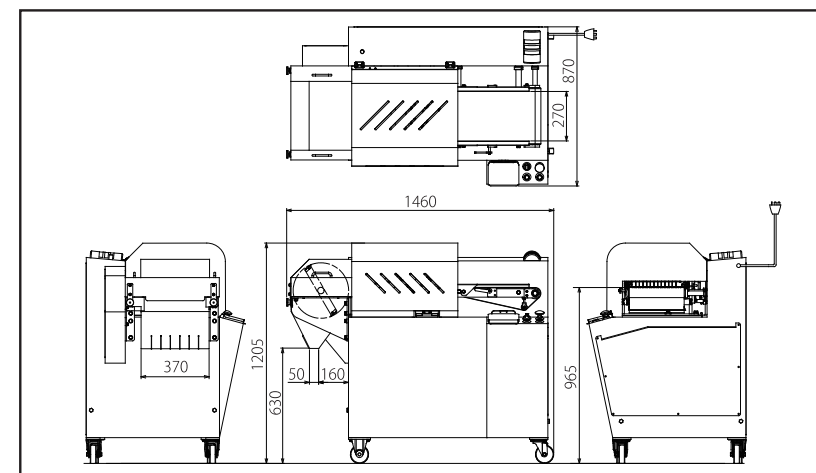
スリットカット



■ SPECIFICATION

DIMENSIONS	W1,460*L870*H1,205mm
WEIGHT	300kg
SLICEABLE DIMENSIONS	W:270mm*H:Equivalent to first slice width
FIRST SLICE	Default 10, 20, 30mm Option 15, 25mm
SECOND SLICE	5~70mm
SECOND SLICE SPEED	5-step speed control (1st: 200slices/min, 2nd: 300slices/min, 3rd:400slices/min, 4th:500slices/min, 5th:600slices/min)
SLICE TEMPRATURE	-3°C~0°C (Depends on product)
RATED ELECTRIC CAPACITY	OUTPUT 1.2kW CURRENT 9 A
POWER CONSUMPTION	0.31kW/0.31kW (50/60Hz w/o load)
POWER SUPPLY	3Phase 200V 50/60Hz More than 20A

■ DIMENSIONS PLEASE CHECK APPROVED DRAWING FOR FURTHER DETAILS.



Due to the machine's structure, there is a risk of foreign matter contamination if operated within the Last Rough movable range. Furthermore, for increased safety during normal operations, the combined use of a metal detector and a foreign material detection device is recommended.

WATANABE
WATANABE FOODMACH CO.,LTD.

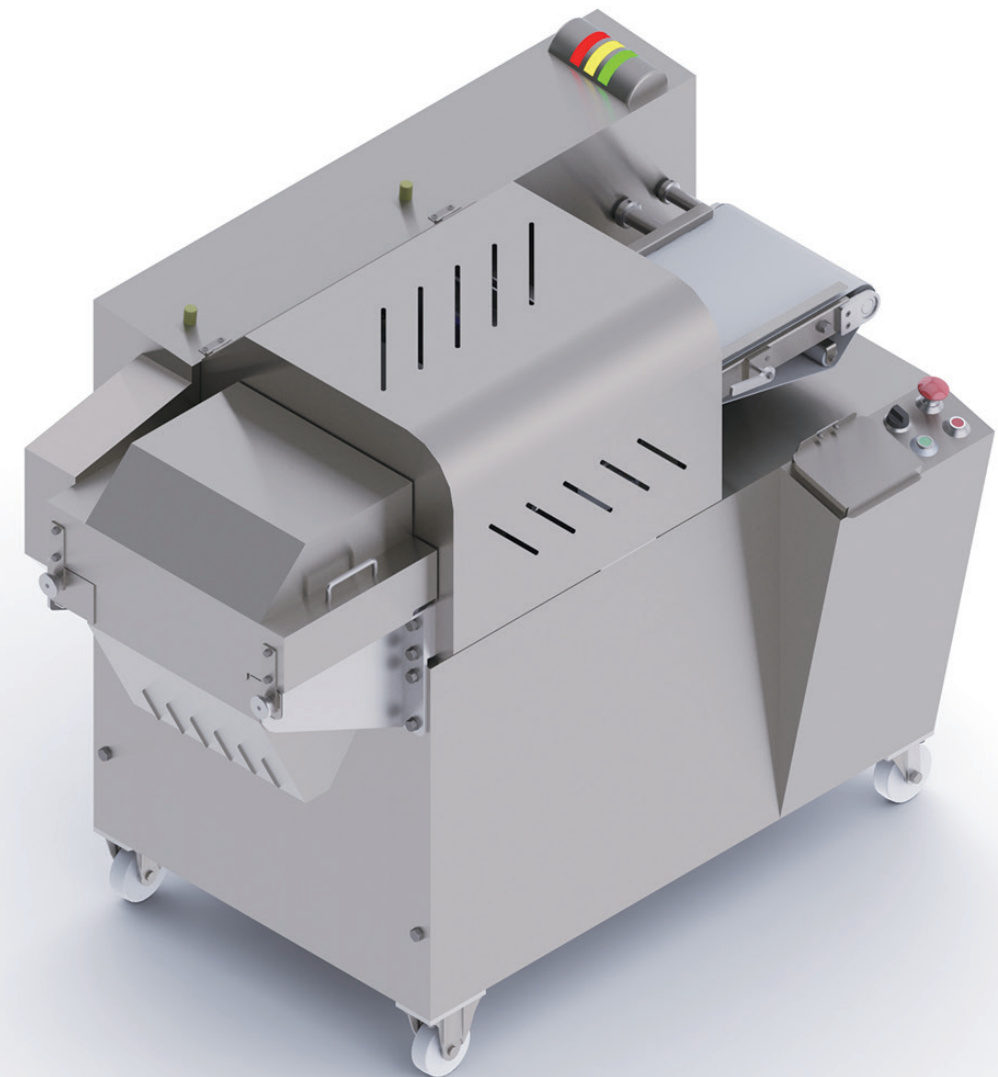
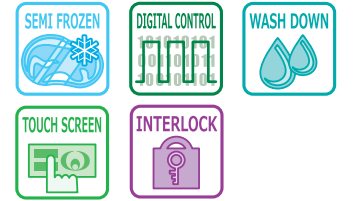
2-12-26 TSUYUHASHI NAKAGAWA-KU NAGOYA JAPAN
TEL:052-361-8511 FAX:052-361-8490
URL: <https://www.foodmach.co.jp/>

SALES AGENT

WATANABE

Multi-Dicer J270 WDJ-270-W

DICE, SLIT, CHIP. FLEXIBLE DICE CUTTER



1ST CUT

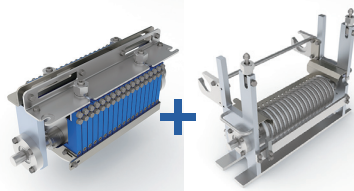
By simply replacing the knife cassette, the slicing pitch can be changed to 10, 20, or 30 mm, enabling a wide variety of slicing options.
*Please specify the desired pitch size upon order.



●OPTION

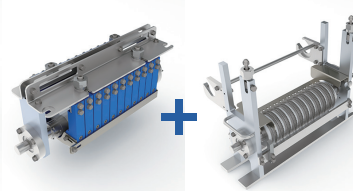
15mm, 25mm variants are also available via the

15mm set



15mm cassette+15mm frame

25mm set

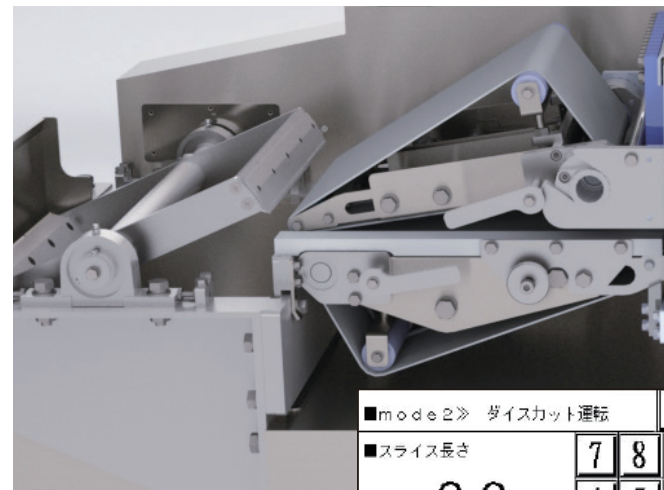


25mm cassette+25mm frame

*The upper and lower parts must be replaced as a set.

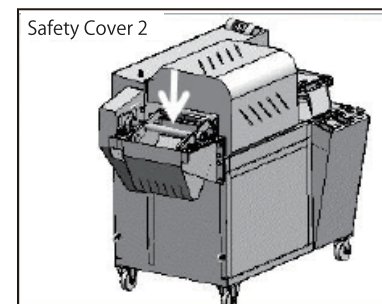
2ND CUT

After the 1st cut, the upper and lower belt will hold and send the product through.
Just enter the desired length on the touch panel for accurate cutting!



Interlock mechanism displayed graphically!

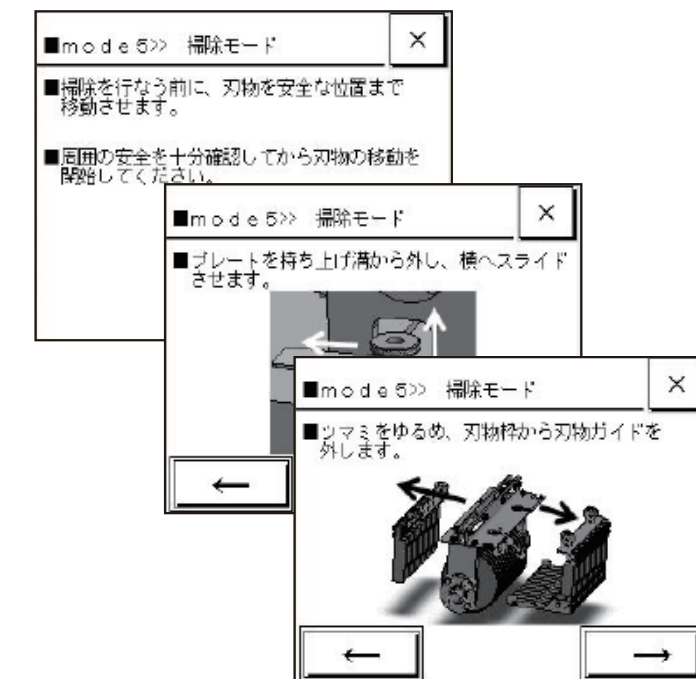
By opening either the blade cover, feeding port, or exit cover, the power will turn off automatically via the interlock mechanism. Visualization achieved by the panel display.



SIMPLE OPERATION

Equipped with a touch panel, making it easy for anyone.

The disassembling process for cleaning will be displayed on the touch panel as a guide



SANITATION ENGINEERING

